



RESIDENTIAL



OFFICE BUILDING



HOSPITAL



AIRPORT



HOTEL & RESORTS



SHOPPING MALL

epicloc



FEEL SAFER ANYWHERE
with more security



- High Quality Door Locks • Architectural Hardware Accessories
- Lever Handles • Cylindrical Lock • Mortise Lock • Door System

about EPIC

COMPANY PROFILE

EPIC Diversity Sdn. Bhd. was established in 1999 with its main business based in Kuala Lumpur, Malaysia. The company specialize in the supply of high-quality doorlocks of various range, miscellaneous architectural hardware accessories and contemporary lever design, cylindrical lock and sliding door system.

Our company has a strong team of professional staff to handle all phases of construction from product design, technological improvement, quality control management and master keying system.

We continuously strive after product development and modernisation to maintain growth & customer satisfaction.

EXPERIENCE

EPIC has been involved in this industry for approximately years, and has gained good experience in implementing and scheduling of Ironmongery for Commercial Projects, Residential, Factories and etc. We also provide master keying services and consultation pertaining to preparing of schedules & recommendation of suitable products to enhance value and properties.

MANPOWER

We have a strong team of experienced and dedicated staff to service our client's requirements. We provide "Smart Locking Solutions" to your needs & tailor our products to your benefits & security.

OUR PRODUCTS

EPIC Diversity Sdn. Bhd. supplies a wide range of high quality contemporary Lever Handles design and Knobsets to meet customers needs & satisfaction. Popular products of EPIC's are Cylindrical Lock, Mortise Lock, Profile Cylinder, Lever Handles, Accessories and Door Closer. Each products serve different functionals needs and various design and pattern to suit the taste & feel of the consumers.

epicloc LEVER HANDLES

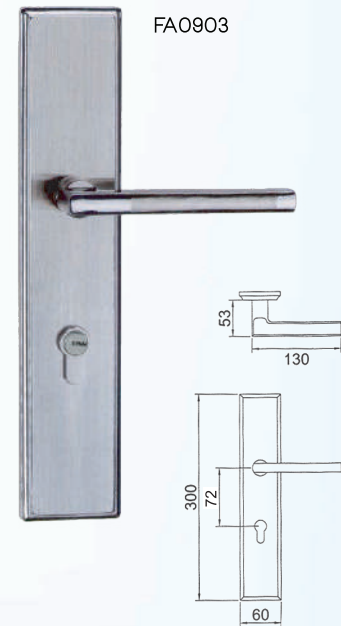
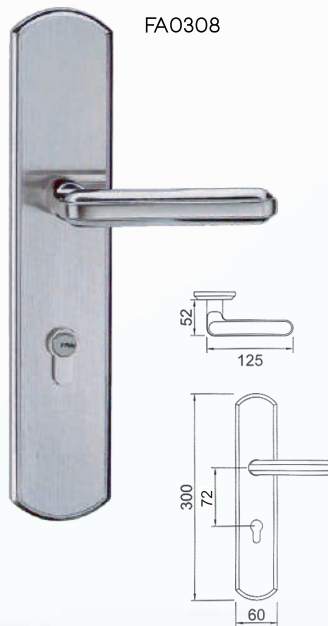
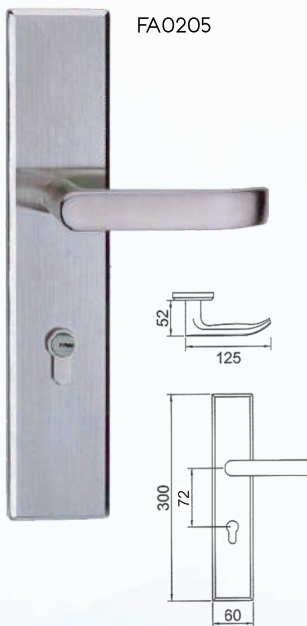
- Hollow Handles



- Solid Handles



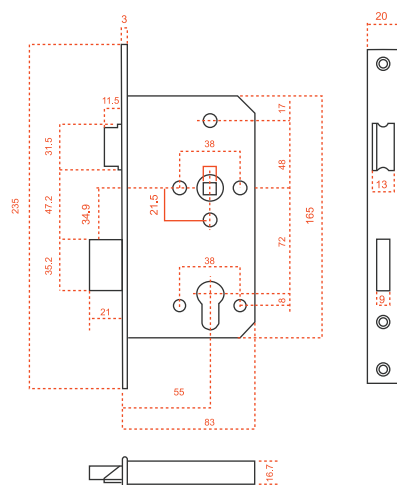
- Handle on Plate



EPIC PRODUCTS



MORTISE LOCKS



Lock Options Deadlock, bathroom lock, latch and nightlatch lock

Case Dimensions 165 x 83 x 16.7mm

Forend Dimensions 235 x 20 x 3mm

Follower to Cylinder Centers 72mm

Cylinder Types Euro profile cylinders

Materials Case is cold rolled steel with a satin nickel finish Hpb-59 brass deadbolt and latchbolt with satin nickel finish Forend is grade 304 stainless steel with matching strike plate. Both forend and strike with square ends (optional rounded forend and strike also available)

Finishes Satin stainless steel (SS) as standard on forend and strike, with optional plated brass (PB) finish to forend and strike on request

Features Phosphor bronze bushed "gripping" follower smooth action, reduced wear and firm positive hold on the spindle Deadbolt throw (double turn of key or cylinder turn): 10.5mm Spring patch is fixed inside to prevent the handle from drooping Key will operate both deadbolt and latch profile, quick reversible without removal of case cover 1.5° positive follower angle, with full follower operation in 2.1°

Standards & Testing Designed specially to meet the requirements of the European standard EN 12209 : 2003 Classification 2C700B3BA2C The locks have successfully undergone the following tests;

Latch Operation 200,000 cycles

Deadbolt Operation 50,000 cycles as the standard, but we can achieve 100,000 cycles in test.

EPIC PRODUCTS

Mortise Lockcase 9700 Series



Sash Lock



Passage Lock



Dead Lock



Anti Panic



Hook Lock

Profile Cylinder



Single Cylinder Thumb Turn



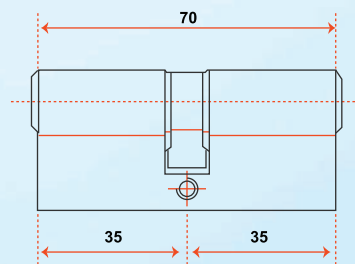
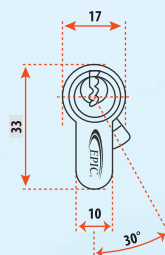
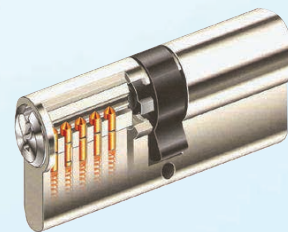
Privacy Cylinder



Half key Cylinder



Double Cylinder



* Available in 5 pins, 6 pins or more.



epicloc

CYLINDRICAL LOCKS



3000 Series

Standard Duty Series
(Security 5 - Pin Tumbler Cylinder - 70mm back set)



5000 Series

Medium Duty Series
(Security 5 - Pin Tumbler Cylinder)
Also available in 6 pins



Tubular Locks

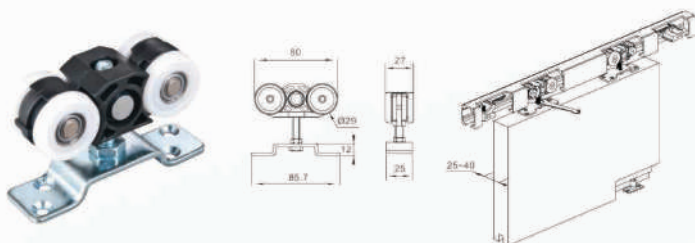


Deadbolts 7000 Series

EPIC PRODUCTS

Straight Sliding Door Systems

Sliding Wooden Door Hardware

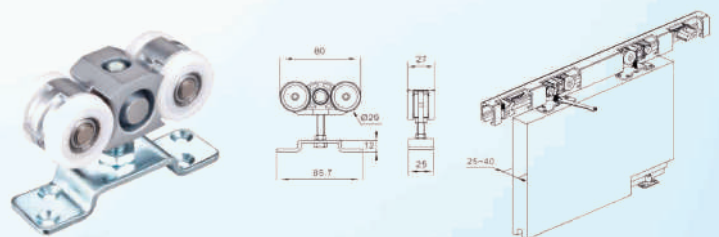


Features

- For single or double leaf doors
- Height adjustment of 8mm
- Max door weight 80KG
- Min. Door thickness 25mm

Materials and Finishes

- Sliding track: Aluminium, Anodized
- Hanging roller: nylon, black
- Bracket : Iron, Zinc



Features

- For single or double leaf doors
- Height adjustment of 8mm
- Max door weight 100KG
- Min. Door Thickness 25mm

Materials and Finishes

- Sliding track: Aluminium, Anodized
- Hanging roller: Zinc alloy, SN, PC
- Bracket : Iron, Zinc

EPIC PRODUCTS

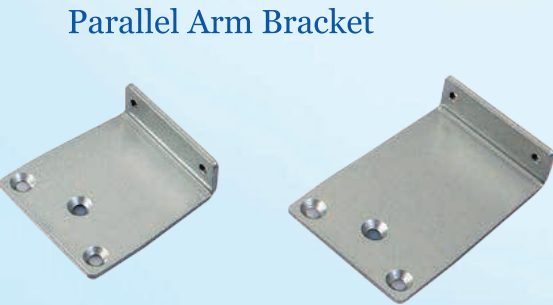
epicloc

DOOR CLOSERS

- Brown
- white
- Silver
- Black

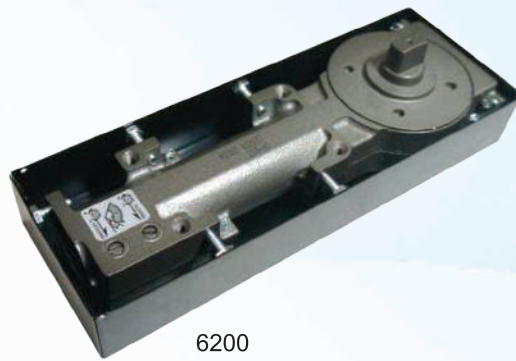


ACCESSORIES



epicloc

FLOOR SPRING



6200

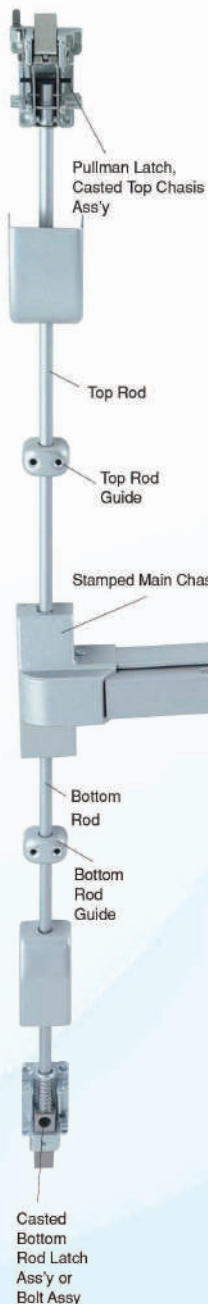


6800

Body dimensions: 274 (L)* 97 (W)* 40 (H) mm
Loading capacity 70 and 105 kg
Suit for 850 to 950 mm width door

Body dimensions: 306 (L)* 108 (W)* 40 (H) mm
Loading capacity 70, 105, 150, and heavy duty 250 kg
Suit for 850 to 1400 mm width door

PANIC PUSH BAR



epicloc

ACCESSORIES



ED-A819



ED-A810

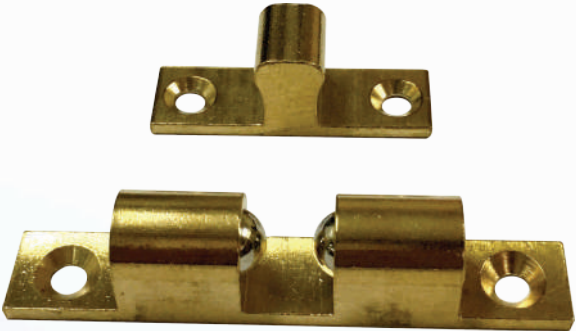


ED-A829

Dust Socket



Brass Ball Catch



Flush Pull



Flush Bolt



Eye Viewer



epicloc ACCESSORIES

Door Stopper



ED-A814



ED-A826



ED-A836



ED-A816



ED-A813



ED-A815



ED-A822

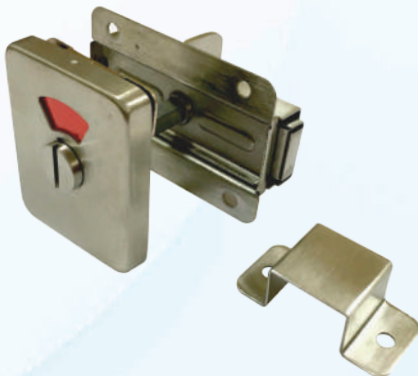


ED-A812



ED-A817

Toilet Indicator



Hinges



EPIC PRODUCTS

Working Partners

Midahdor

SAMSUNG

Ailie

SEVENOC

Daedalus
TAIWAN

GEZE

www.epicloc.com

epicloc

EPIC Diversity Sdn. Bhd (377082-V)

A Member Of Chin Hin Group Berhad

36-2, Jalan Kuchai Maju 11, Kuchai Entrepreneurs Park, Off Jalan Kuchai Lama, 58200 Kuala Lumpur, Malaysia.

Tel: 603 - 7981 3223 (Hunting Line) / 603 - 7981 3213

Fax: 603 - 7980 7329 / 7982 9391

